

4/23/88



ABC Watermark



FOR WEEK ENDING: 4/23/88
 CYCLE NO. 882 PROGRAM 4 OF 13
 DISC & HALF HOUR NO. 1A (backed w/4B)
 PAGE NO. 1

3575 Cahuenga Blvd. W., Suite 555, Los Angeles, CA 90068

ABC Contemporary Radio Network

SCHEDULED START TIME	ACTUAL TIME	ELEMENT	RUNNING TIME
00:00		BILLBOARD: "NOW, AMERICAN TOP 40 BROUGHT TO YOU IN PART BY LEVI'S 501 JEANS. SPECIALLY MADE TO GIVE YOU A UNIQUE, PERSONAL FIT THAT NO ORDINARY JEANS CAN MATCH." THEME AND OPENING OF PART I THEME AND JINGLES, JIM LONG/ASCAP #40. ONE GOOD REASON (A) Paul Carrack #39. STRANGE BUT TRUE (A) Times Two	08:21
08:21		NETWORK SPOT: LEAF CANDY/HOUSTESS ^{C-1} (OUT CUE) Jingle ends cold after... "...sweet sensation."	:30/30
09:21		LOCAL INSERT:	:60
10:21		LOGO: AMERICAN TOP 40 #38. EVERYTHING YOUR HEART DESIRES (B) Daryl Hall and John Oates #37. GOING BACK TO CALI (A) L.L. Cool J	07:32
17:53		NETWORK SPOT: CLEAR-BY-DESIGN/U.S. ARMY ACTIVE ^{C-2} (OUT CUE) Voice out cold with... "...the U.S. Army."	:30/30
18:53		LOCAL INSERT:	:60
19:53		LOGO: AMERICAN TOP 40 #36. MY GIRL (A) Suave #35. NEVER GONNA GIVE YOU UP (A) Rick Astley	08:41
28:34		NETWORK SPOT: GREYHOUND/OXY LINE ^{C-3} (OUT CUE) Voice out cold with... "...only as directed."	:30/30
29:34		LOCAL INSERT:	:60
30:34		STATION I. D.:	:10



ABC Watermark



FOR WEEK ENDING: 4/23 /88
CYCLE NO. 882 PROGRAM 4 OF 13
DISC & HALF HOUR NO. 1B (backed w/ 3A)
PAGE NO. 2

3575 Cahuenga Blvd. W., Suite 555, Los Angeles, CA 90068

ABC Contemporary Radio Network

SCHEDULED START TIME	ACTUAL TIME	ELEMENT	RUNNING TIME
30:44		LOGO: AMERICAN TOP 40 THEME AND JINGLES, JIM LONG/ASCAP STATION MENTIONS #34. SAY IT AGAIN (B) Jermaine Stewart	04:32
35:16		C-4 NETWORK SPOT: CAREFREE/LEVI JEANS (OUT CUE) Jingle fades after... "...501 Blues."	:30/30
36:16		LOCAL INSERT:	:60
37:16		LOGO: AMERICAN TOP 40 #33. KISS AND TELL (B) Bryan Ferry <u>QL: HIGHEST DEBUT IN HOT 100</u> #32. DREAMING (A) Orchestral Manoeuvres In the Dark	08:07
45:23		C-5 NETWORK SPOT: KIT KAT/COLGATE TELEDISC (OUT CUE) Jingle fades after... "...never forget."	:30/90
47:23		LOGO: AMERICAN TOP 40 #31. ONE MORE TRY (A) George Michael #30. I WANT HER (A) Keith Sweat	10:10
57:24		THEME UP AND UNDER WITH TALK UNIT ENDING AT: 57:33 THEME: (:17) TO: 57:50	
57:50		LOCAL INSERT: C-6	2:00
59:50		STATION I. D.:	:10



ABC Watermark



FOR WEEK ENDING: 4/23/88
 CYCLE NO. 882 PROGRAM 4 OF 13
 DISC & HALF HOUR NO. 2A (backed w/ 3B)
 PAGE NO. 3

3575 Cahuenga Blvd. W., Suite 555, Los Angeles, CA 90068

ABC Contemporary Radio Network

SCHEDULED START TIME	ACTUAL TIME	ELEMENT	RUNNING TIME
00:00		THEME AND OPENING OF PART II THEME AND JINGLES, JIM LONG/ASCAP #29. PIANO IN THE DARK (A) Brenda Russell featuring Joe Esposito	05:57
05:57		NETWORK SPOT: U.S ARMY ACTIVE/ROACH CONTROLLER (OUT CUE) Jingle ends cold with... "...Roach Controller."	:30/30
06:57		LOCAL INSERT:	:60
07:57		LOGO: AMERICAN TOP 40 #28. CHECK IT OUT (A) John Cougar Mellencamp #27. <u>PAMELA</u> (A) Toto	10:21
18:18		NETWORK SPOT: HOSTESS/CAREFREE (OUT CUE) Jingle ends cold with... "...Carefree."	:30/30
19:18		LOCAL INSERT:	:60
20:18		LOGO: AMERICAN TOP 40 #26. YOU DON'T KNOW (B) Scarlett & Black #25. <u>I WISH I HAD A GIRL</u> (B) Henry Lee Summer	09:26
29:44		NETWORK SPOT: OXY LINE/ROACH CONTROLLER (OUT CUE) Jingle ends cold with... "...Roach Controller."	:30/30
30:44		LOCAL INSERT:	:60
31:44		STATION I. D.:	:10



3575 Cahuenga Blvd. W., Suite 555, Los Angeles, CA 90068

ABC Contemporary Radio Network

SCHEDULED START TIME	ACTUAL TIME	ELEMENT	RUNNING TIME
31:54		LOGO: AMERICAN TOP 40 THEME AND JINGLES, JIM LONG/ASCAP #24. ENDLESS SUMMER NIGHTS (A) Richard Marx #23. FISHNET (A) Morris Day	07:43
39:37		C-4 NETWORK SPOT: GREYHOUND/CLEAR-BY-DESIGN (OUT CUE) Voice out cold with... "...use as directed."	:30/30
40:37		LOCAL INSERT:	:60
41:37		LOGO: AMERICAN TOP 40 STATION MENTIONS #22. TWO OCCASIONS (A&B) The Deele	04:05
45:42		C-5 NETWORK SPOT: LEVI JEANS/COLGATE TELEDISC (OUT CUE) Jingle fades after... "...never forget."	:30/90
47:42		LOGO: AMERICAN TOP 40 #21. WAIT (A) White Lion LDD: I WON'T FORGET YOU (B) Poison	10:07
57:43		THEME UP AND UNDER WITH TALK UNIT ENDING AT: 57:49 THEME: (:01) TO: 57:50	
57:50		LOCAL INSERT:	2:00
59:50		STATION I. D.:	:10



ABC Watermark



FOR WEEK ENDING: 4/23/88
 CYCLE NO. 802 PROGRAM 4 OF 13
 DISC & HALF HOUR NO. 3A (backed w/1B)
 PAGE NO. 5

3575 Cahuenga Blvd. W., Suite 555, Los Angeles, CA 90068

ABC Contemporary Radio Network

SCHEDULED START TIME	ACTUAL TIME	ELEMENT	RUNNING TIME
00:00		THEME AND OPENING OF PART III THEME AND JINGLES, JIM LONG/ASCAP #20. I DON'T WANT TO LIVE WITHOUT YOU (A) Foreigner #19. OUT OF THE BLUE (A) Debbie Gibson	07:37
07:37		^{C-1} NETWORK SPOT: U.S. ARMY ACTIVE/OXYLINE (OUT CUE) Voice out cold with... "...use as directed."	:30/30
08:37		LOCAL INSERT:	:60
09:37		LOGO: AMERICAN TOP 40 #18. SHATTERED DREAMS () Johnny Hates Jazz #17. NAUGHTY GIRLS NEED LOVE TOO (B) Samantha Fox	08:57
18:34		^{C-2} NETWORK SPOT: KIT KAT/CLEAR-BY-DESIGN (OUT CUE) Voice out cold with... "...use as directed."	:30/30
19:34		LOCAL INSERT:	
20:34		LOGO: AMERICAN TOP 40 STATION MENTIONS #16. ALWAYS ON MY MIND (B) Pet Shop Boys #15. ROCKET 2 U (B) The Jets	08:15
28:49		^{C-3} NETWORK SPOT: LEAF CANDY/LEVI JEANS (OUT CUE) Jingle ends cold with... "...my, oh my."	:30/30
29:49		LOCAL INSERT:	:60
30:49		STATION I. D.:	:10



ABC Watermark



FOR WEEK ENDING: 4/23/88
 CYCLE NO. 882 PROGRAM 4 OF 13
 DISC & HALF HOUR NO. 3B (backed w/2A)
 PAGE NO. 6

3575 Cahuenga Blvd. W., Suite 555, Los Angeles, CA 90068

ABC Contemporary Radio Network

SCHEDULED START TIME	ACTUAL TIME	ELEMENT	RUNNING TIME
30:59		LOGO: AMERICAN TOP 40 THEME AND JINGLES, JIM LONG/ASCAP #14. ELECTRIC BLUE (A&B) Icehouse #13. ONE STEP UP (A) Bruce Springsteen	09:06
40:05		C-4 NETWORK SPOT: LEAF CANDY/GREYHOUND (OUT CUE) Jingle ends cold after... "...driving to us."	:30/30
41:05		LOCAL INSERT:	:60
42:05		LOGO: AMERICAN TOP 40 #12. SOME KIND OF LOVER (A) Jody Watley	04:36
46:41		C-5 NETWORK SPOT: CAREFREE/COLGATE TELEDISC (OUT CUE) Jingle fades after... "...never forget."	:30/90
48:41		LOGO: AMERICAN TOP 40 #11. MAN IN THE MIRROR (A) Michael Jackson #10. PROVE YOUR LOVE (A) Taylor Dayne	09:02
57:34		THEME UP AND UNDER WITH TALK UNIT ENDING AT: 57:43 THEME: (:07) TO: 57:50	
57:50		LOCAL INSERT: C-6	2:00
59:50		STATION I. D.:	:10



FOR WEEK ENDING: 4/23/88
 CYCLE NO. 882 PROGRAM 4 OF 13
 DISC & HALF HOUR NO. 4A (backed w/2B)
 PAGE NO. 7

3575 Cahuenga Blvd. W., Suite 555, Los Angeles, CA 90068

ABC Contemporary Radio Network

SCHEDULED START TIME	ACTUAL TIME	ELEMENT	RUNNING TIME
00:00		THEME AND OPENING OF PART IV THEME AND JINGLES, JIM LONG/ASCAP STATION WELCOMES #9. PINK CADILLAC (A) Natalie Cole	04:44
04:44		NETWORK SPOT: CAREFREE/LEVI JEANS C-1 (OUR CUE) Jingle ends cold after... "...that's it."	:30/30
05:44		LOCAL INSERT:	:60
06:44		LOGO: AMERICAN TOP 40 STATION MENTIONS #8. ANYTHING FOR YOU (B) Gloria Estefan & Miami Sound Machine LDD: BORN IN THE U.S.A. (A) Bruce Springsteen	09:36
16:20		NETWORK SPOT: KIT KAT/ROACH CONTROLLER C-2 (OUT CUE) Jingle ends cold with... "...Roach Controller."	:30/30
17:20		LOCAL INSERT:	:60
18:20		LOGO: AMERICAN TOP 40 #7. I SAW HIM STANDING THERE (B) Tiffany #6. ANGEL (A&B) Aerosmith ***** * TOPICALS ARE LOCATED * * AT THE END OF SIDE 4A * *****	07:57
26:17		NETWORK SPOT: U.S. ARMY ACTIVE/KIT KAT C-3 (OUT CUE) Voice out cold with... "...what you want."	:30/30
27:17		LOCAL INSERT:	:60
28:17		STATION I. D.:	:10



ABC Watermark



FOR WEEK ENDING: 4/23/88
CYCLE NO. 882 PROGRAM 4 OF 13
DISC & HALF HOUR NO. 4B (backed w/1A)
PAGE NO. 8

3575 Cahuenga Blvd. W., Suite 555, Los Angeles, CA 90068

ABC Contemporary Radio Network

SCHEDULED START TIME	ACTUAL TIME	ELEMENT	RUNNING TIME
28:27		LOGO: AMERICAN TOP 40 THEME AND JINGLES, JIM LONG/ASCAP #5. GIRLFRIEND (B) Pebbles #4. WISHING WELL (B) Terence Trent D'Arby	09:14
37:41		C-4 NETWORK SPOT: CLEAR-BY-DESIGN/LEAF CANDY (OUT CUE) Jingle ends cold after... "...whoppers."	:30/30
38:41		LOCAL INSERT:	:60
39:41		LOGO: AMERICAN TOP 40 #3. GET OUTTA MY DREAMS, GET INTO MY CAR (A) Billy Ocean	05:21
45:02		C-5 NETWORK SPOT: GREYHOUND/COLGATE TELEDISC (OUT CUE) Jingle fades after... "...never forget."	:30/90
47:02		LOGO: AMERICAN TOP 40 #2. DEVIL INSIDE (A) Inxs #1. WHERE DO BROKEN HEARTS GO? (A) Whitney Houston CLOSE: "AMERICAN TOP 40 WAS BROUGHT TO YOU IN PART BY LEVI 501 JEANS. SPECIALLY MADE TO GIVE YOU A UNIQUE, PERSONAL FIT THAT NO ORDINARY JEANS CAN MATCH." THEME UP AND UNDER WITH TALK UNIT ENDING AT: 57:44 THEME: (:06) TO: 57:50	10:51
56:44			
57:50		LOCAL INSERT:	2:00
59:50		STATION I. D.:	:10

FORMAT AND COMMERCIAL CLOCK

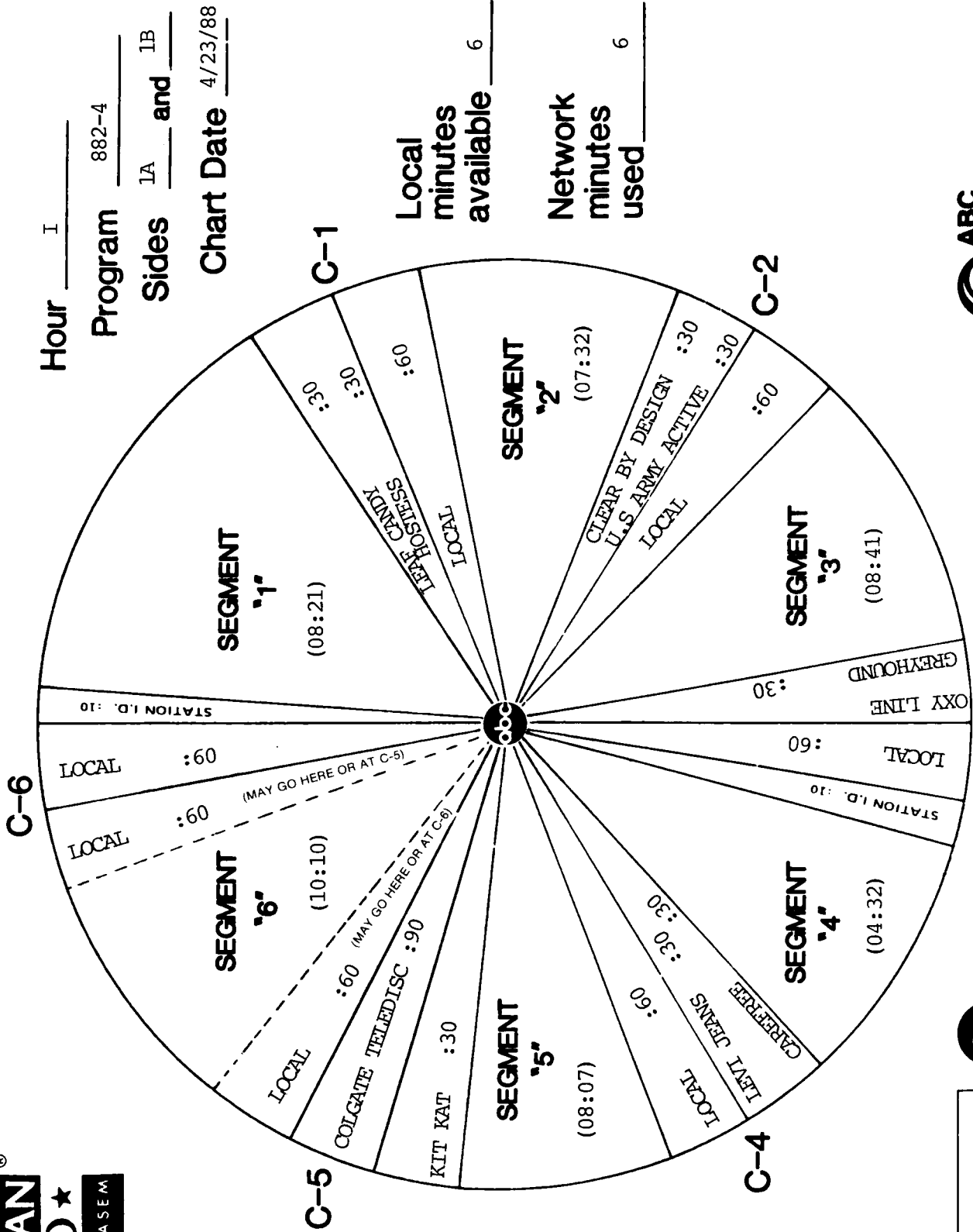
AMERICAN
★ TOP40 ★
WITH CASEY KASEM

Hour I

Program 882-4

Sides 1A and 1B

Chart Date 4/23/88



Local minutes available 6

Network minutes used 6



ABC Watermark

FORMAT AND COMMERCIAL CLOCK

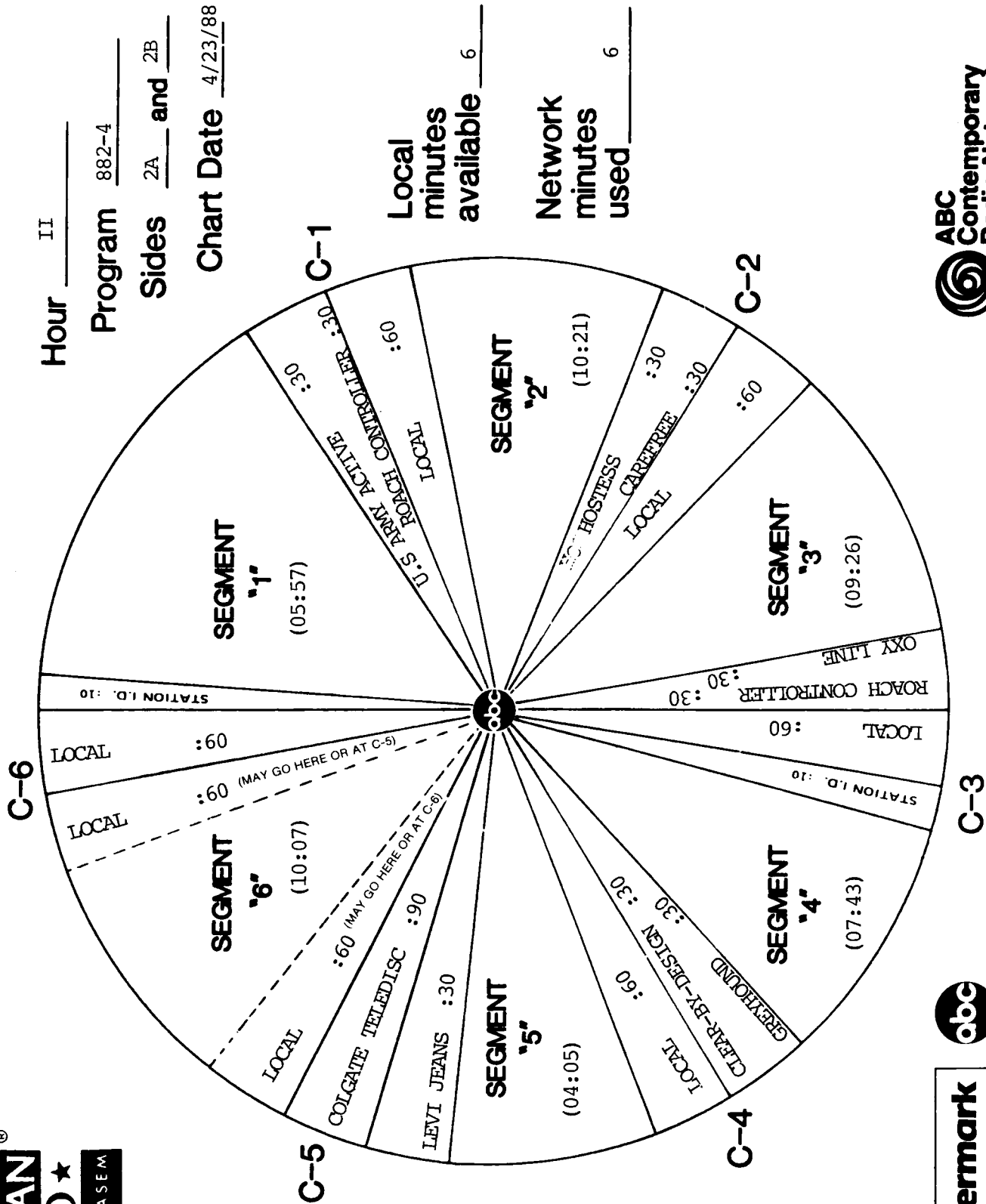
AMERICAN
★ **TOP40** ★
WITH CASEY KASEM

Hour II

Program 882-4

Sides 2A and 2B

Chart Date 4/23/88



ABC Watermark

FORMAT AND COMMERCIAL CLOCK

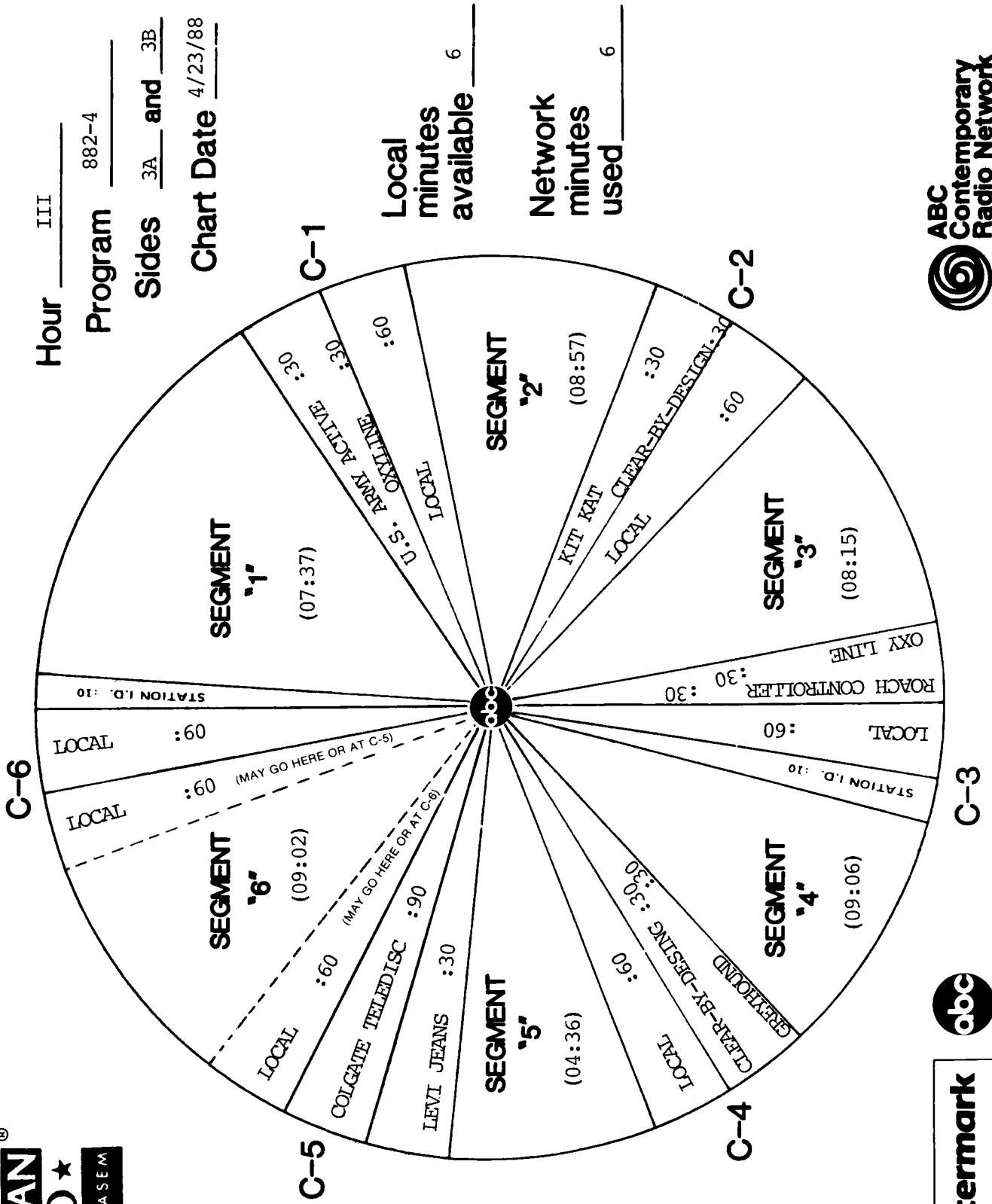
AMERICAN[®]
★ TOP40 ★
 WITH CASEY KASEM

Hour III

Program 882-4

Sides 3A and 3B

Chart Date 4/23/88



Local minutes available 6

Network minutes used 6

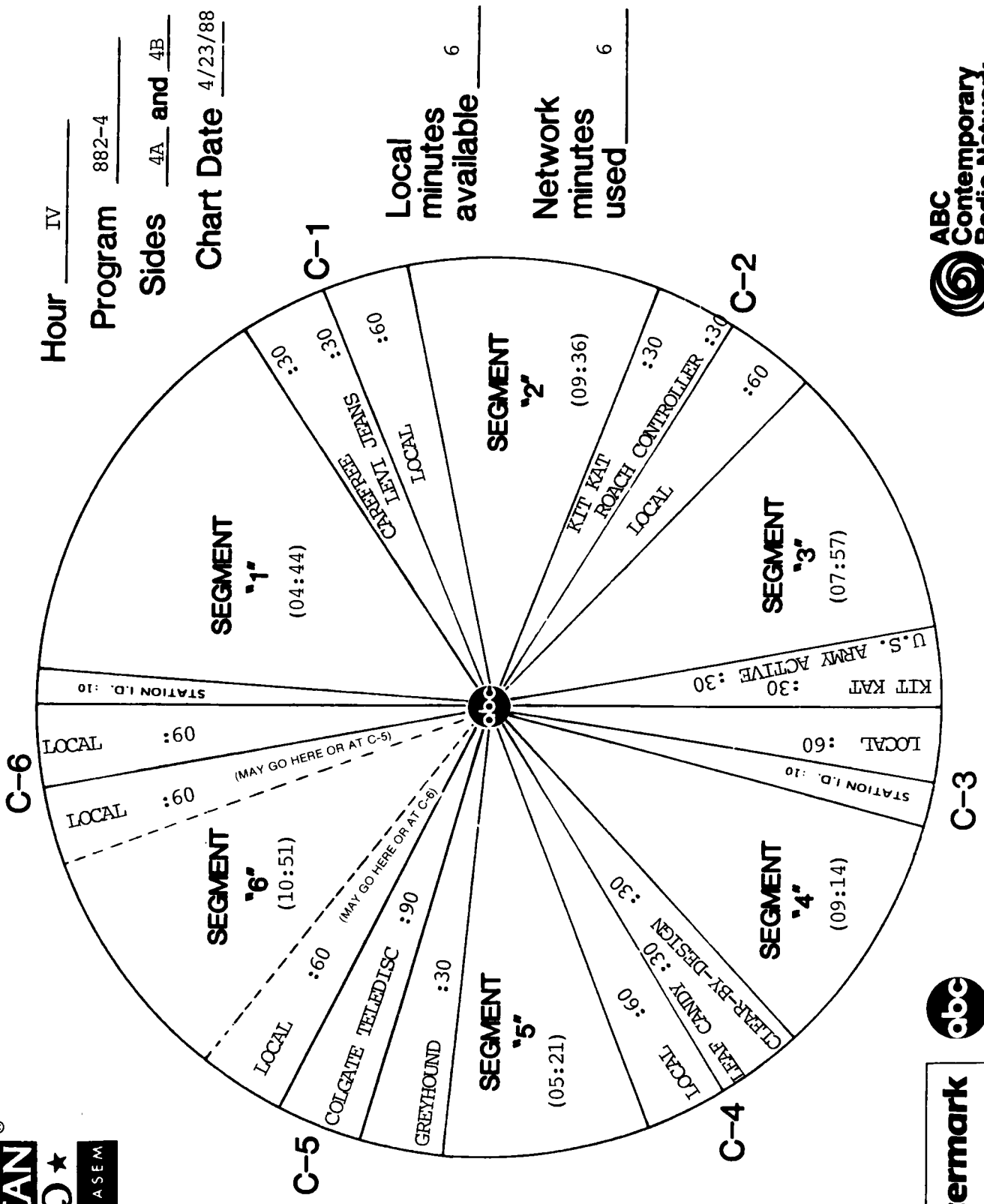


ABC Watermark

FORMAT AND COMMERCIAL CLOCK



Hour IV
 Program 882-4
 Sides 4A and 4B
 Chart Date 4/23/88



Local minutes available 6
 Network minutes used 6





TOPICAL PROMOS

TOPICAL PROMOS FOR SHOW #882-4 ARE LOCATED AT THE END OF SIDE 4A

DO NOT USE AFTER APRIL 23, 1988

1) THE FIRE DOWN BELOW (:28)

Hi, this is Casey Kasem. On last week's Official Billboard countdown, Billy Ocean was at #1 for a second week with "GET OUT OF MY DREAMS, GET INTO MY CAR." Will Billy stay parked on top? There's a fire down below--we've got a "DEVIL INSIDE" the countdown. INXS climbed to #2 with their latest. And at #3 there's Whitney Houston singin', "WHERE DO BROKEN HEARTS GO?" Maybe #1? We'll find out who's #1 this week as we count down the most popular songs in the U.S.A. on American Top 40.

2) ONE MORE #1? (:20)

Hi, this is Casey Kasem. Last week, English superstar George Michael debuted on the entire Billboard "Hot 100" Singles chart at #40 with his latest hit. George's last two hits, "FAITH, and "FATHER FIGURE", both hit #1. Will his new song, "ONE MORE TRY", give him one more #1? We'll check out George's moves on American Top 40.

3) AMERICA'S FAVORITE COUNTDOWN CEREAL (:28)

Hi, this is Casey Kasem, and look who's back on the Official Billboard chart. Their six #1's, including, "RICH GIRL", "MANEATER", and "OUT OF TOUCH", have heaped make daryl Hall and John Oates the top duo of the rock era. After three years away, and some time apart, they're back together again, looking to debut this week with a new hit, "EVERYTHING YOUR HEART DESIRES." If record buyers desire Hall and Oates, they could find their way back into the countdown on American Top 40.

4) THE TEEN HIT MACHINE (:29)

Hi, this is Casey Kasem. Ya' know, most artists spend their entire career, decades, without ever scoring a #1 hit. But there's a new star in the countdown who's already scored two #1's, and she hasn't even graduated high school yet. 16 year-old Tiffany, from Norwalk, California, topped the Billboard chart with her first two hits: "I THINK WE'RE ALONE NOW" and "COULD'VE BEEN." And her third hit, "I SAW HIM STANDING THERE" has reached the Top Ten, looking toward that already familiar #1 spot. Tiffany's a teen hit machine on American Top 40.

5) WE DON'T HAVE TO DRIVE IT--WE CAN PARK IT IN THE TOP TEN (:21)

Hi, this is Casey Kasem. Singing star Natalie Cole has been drivin' up the Official Billboard chart with her funky tune-up of Bruce Springsteen's song, "PINK CADILLAC." With her foot to the floor, Natalie could cruise into the top ten for the first time in ten years. Where will she park this week? We'll direct the tuneful traffic as we count 'em down on American Top 40.

