



PREMIERE
RADIO NETWORKS

15260 VENTURA BOULEVARD
5TH FLOOR
SHERMAN OAKS, CALIFORNIA 91403-5339
TELEPHONE (818) 377-5300
FAX (818) 377-5333

Website: <http://www.premiereradio.com>

Show Code: #02-05

Show Date: Weekend of February 2-3, 2002

Disc One/Hour One

Seg. 1 Track 1

Open Billboards:

Content: #20 "HEY BABY" - No Doubt
#19 "BREATHING" - Lifehouse

Commercials: :30 Starbucks
:30 AT&T Wireless

:30 CK/America's Top

Outcue: "...1-800-TOP-TEN-HITS" (music out)

Segment Time: 10:47

Local Break: 1:30

Seg. 2 Track 2

Content: #18 "NEW YORK, NEW YORK" - Ryan Adams
EXT: "BLACK VELVET" - Alannah Myles

Commercials: :30 Purell Hand Clean
:30 Campbell's R&W Co
:60 XM Sataelite Radio

Outcue: "...fee also required"

Segment time: 12:25

Local Break 1:00

Seg. 3 Track 3

Content: #17 "FALLIN'" - Alicia Keys
EXT: "ANGEL OF HARLEM" - U2

Commercials: :30 Hallmark/Kiss Bear
:30 CK/America's Top
:30 AT&T Wireless

Outcue: "...what is M-Life?"

Segment time: 9:16

Local Break 1:30

Seg. 4 Track 4

Content: #16 "HANDS CLEAN" - Alanis Morissette
LDD: "THERE YOU'LL BE" - Faith Hill

Commercials: :60 XM Satellite Radio
:30 Purell Hand Clean
:30 Alka Seltzer Plus

Outcue: "...use as directed"

Segment time: 11:51

Local Break 1:00

Seg. 5 Track 5

Content: #15 "BE LIKE THAT" - 3 Doors Down
#14 "PEACEFUL WORLD" - John Mellencamp F/ India.Arie

Outcue: Jingle out

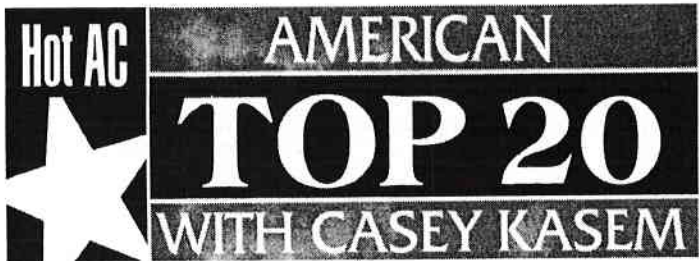
Segment time: 9:43

Insert local ID over :06 jingle bed

END OF DISC ONE ---- DISC TWO STARTS AT SEGMENT SIX

America's Top Hits for Monday (Ace Of Base) on Track 6

America's Top Hits for Tuesday (Abba) on Track 7



PREMIERE
RADIO NETWORKS

15260 VENTURA BOULEVARD
5TH FLOOR
SHERMAN OAKS, CALIFORNIA 91403-5339
TELEPHONE (818) 377-5300
FAX (818) 377-5333

Website: <http://www.premiereradio.com>

Show Code: #02-05

Show Date: Weekend of February 2-3, 2002

Disc Two/Hour Two

Seg. 6 Track 1

Content:

#13 "STUCK IN A MOMENT YOU CAN'T GET OUT OF" – U2

EXT: "HEARTBREAKER" – Pat Benatar

jCommercials:

:30 Campbell's R&W Co

:30 Starbucks

:30 Purell Hand Clean

"...go with it"

Outcue:

Segment time: 8:58

Local Break 1:30

Seg. 7 Track 2

Content:

#12 "EVERYDAY" – The Dave Matthews Band

EXT: "COME TO MY WINDOW" – Melissa Etheridge

Commercials:

:60 XM Satellite Radio

:30 CK/America's Top

:30 Hallmark/Kiss Bear

"...only from Hallmark"

Outcue:

Segment time: 10:43

Local Break 1:00

Seg. 8 Track 3

Contents:

#11 "HERO" – Enrique Iglesias

EXT: "HERE'S TO THE NIGHT" – Eve 6

#10 "DIG IN" – Lenny Kravitz

Commercials:

:30 AT&T Wireless

:30 Purell Hand Clean

:30 Starbucks

"...at home, at last"

Outcue:

Segment time: 15:13

Local Break 1:30

Seg. 9 Track 4

Content:

#9 "IT'S BEEN AWHILE" – Staind

LDD: "I WILL REMEMBER YOU" – Sarah McLachlan

Commercials:

:30 Alka Seltzer Plus

:30 CK/America's Top

:30 US Navy Armed Srv

:30 AT&T Wireless

"...what is M-Life?"

Outcue:

Segment time: 12:06

Local Break 1:00

Seg. 10 Track 5

Content:

#8 "HANGING BY A MOMENT" – Lifehouse

Outcue:

Jingle out

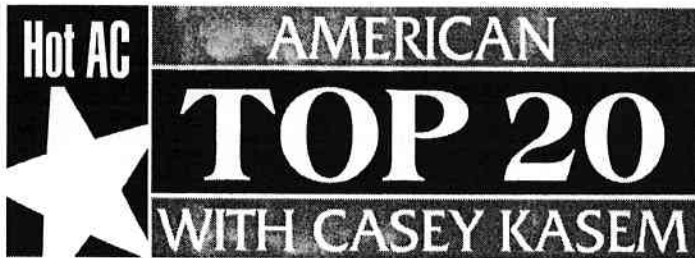
Segment Time: 5:43

Insert local ID over :06 jingle bed

END OF DISC TWO -- DISC THREE STARTS AT SEGMENT 11

America's Top Hits for Wednesday (Faith Hill) on Track 6

America's Top Hits For Thursday (Eddie Money) on Track 7



PREMIERE
RADIO NETWORKS

15260 VENTURA BOULEVARD
5TH FLOOR
SHERMAN OAKS, CALIFORNIA 91403-5339
TELEPHONE (818) 377-5300
FAX (818) 377-5333

Website: <http://www.premiereradio.com>

Show Number: #02 - 05
Show Date: Weekend of February 2-3, 2002
Disc Three/Hour Three

Seg. 11 Track 1

Content: #7 "ONLY TIME" – Enya
EXT: "SUMMER OF '69" – Bryan Adams

Commercials: :30 Purell Hand Clean
:60 XM Satellite Radio

Outcue: "...fee also required"

Segment time: 9:39

Local Break 1:30

Seg. 12 Track 2

Content: #6 "DROPS OF JUPITER" – Train
EXT: "THE MUMMER'S DANCE"- Loreena McKennitt

Commercials: :30 Starbucks
:30 AT&T Wireless
:30 Hallmark/Kiss Bear
:30 CK/America's Top

Outcue: "... 1-800-TOP-TEN-HITS" (music out)

Segment time: 11:17

Local Break 1:00

Seg. 13 Track 3

Content: #5 "MY SACRIFICE" – Creed
LDD: "THE POWER OF LOVE" – Celine Dion
#4 "STANDING STILL" – Jewel

Commercials: :60 XM Satellite Radio
:30 CK/America's Top

Outcue: "... 1-800-TOP-TEN-HITS" (music out)

Segment time: 17:22

Local Break 1:30

Seg. 14 Track 4

Content: #3 "SUPERMAN (IT'S NOT EASY)" – Five For Fighting
EXT: "3 AM" – Matchbox Twenty

Commercials: :30 US Navy Armed Srv
:30 Campbell's R&W Co
:30 AT&T Wireless
:30 Purell Hand Clean

Outcue: "...go with it"

Segment time: 10:08

Local Break 1:00

Seg. 15 Track 5

Content: #2 "HOW YOU REMIND ME" – Nickelback
#1 "WHEREVER YOU WILL GO" – The Calling

Close Billboards: None

Outcue: "... TM Century Hit Disc's."

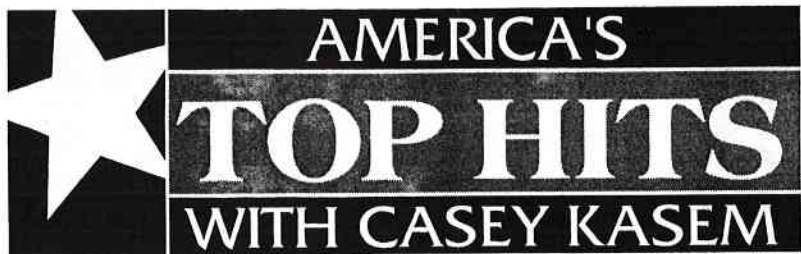
Segment Time: 9:37

Theme out: 10:07

END OF DISC THREE

***American Top 20 show promos are on Track 6 & 7 & 8 *** 0:42 X 3

America's Top Hits for Friday (Mr. Big) on Track 9



W E E K D A Y F E A T U R E

PREMIERE
RADIO NETWORKS

15260 VENTURA BOULEVARD
5TH FLOOR
SHERMAN OAKS, CALIFORNIA 91403-5339
TELEPHONE (818) 377-5300
FAX (818) 377-5333

Website: <http://www.premiereradio.com>

Summary of America's Top Hits

"America's Top Hits" segments are included at the ends of every disc/hour. Please refer to the disc number, track, content, outcue and times listed below.

Show Code: 02-06 —
Week of: February 4, 2002

MONDAY

Disc 1, Track 6

Show 1:
Incue: Jingle in
Content: "THE SIGN" – Ace Of Base
Commercial: :30 Spam Oven Roasted Turkey
:30 Tyson Foods/ Chicken
Outcue: "...I'm Casey Kasem."
Total Time: 5:19

TUESDAY

Disc 1, Track 7

Show 2:
Incue: Jingle in
Content: "DANCING QUEEN" - Abba
Commercial: :30 Spam Oven Roasted Turkey
:30 Tyson Foods/ Chicken
Outcue: "...I'm Casey Kasem."
Total Time: 5:50

WEDNESDAY

Disc 2, Track 6

Show 3:
Incue: Jingle in
Content: "THE WAY YOU LOVE ME" – Faith Hill
Commercial: :30 Purell Hand Clean
:30 Tyson Foods/ Chicken
Outcue: "...I'm Casey Kasem."
Total Time: 5:37

THURSDAY

Disc 2, Track 7

Show 4:
Incue: Jingle in
Content: "I WANNA GO BACK" – Eddie Money
Commercial: :30 Purell Hand Clean
:30 Tyson Foods/ Chicken
Outcue: "...I'm Casey Kasem."
Total Time: 6:09

FRIDAY

Disc 3, Track 8

Show 5:
Incue: Jingle in
Content: "TO BE WITH YOU" – Mr. Big
Commercial: :30 Pure Lip
:30 Tyson Foods/ Chicken
Outcue: "...I'm Casey Kasem."
Total Time: 5:41