



ABC Watermark



FOR WEEK ENDING: 11/17/84
 CYCLE NO. 844 PROGRAM 7 OF 13
 DISC & HALF HOUR NO. 1A
 PAGE NO. 1

3575 Cahuenga Blvd. W., Suite 555, Los Angeles, CA 90068

ABC Entertainment Radio Network

SCHEDULED START TIME	ACTUAL TIME	ELEMENT	RUNNING TIME
00:00		OPEN BILLBOARD: "NOW AMERICAN COUNTRY COUNTDOWN, BROUGHT TO YOU IN PART BY RAM TOUGH DODGE TRUCKS. AT DODGE, WE DON'T JUST TALK TOUGH, WE PROVE IT. THEME AND OPENING OF PART I THEME: "MY KIND OF COUNTRY" (MARKWATER MUSIC/BMI) #40 PLEDGING MY LOVE (B) Emmylou Harris #39 RADIO LAND (A/B) Michael Martin Murphey LOGO: MY KIND OF COUNTRY, MY KIND OF MUSIC	08:21
08:21		NETWORK SPOT: Dodge Truck (OUT CUE) Jingle ends after... "...where it's mouth is."	:60
09:21		LOCAL INSERT:	:60
10:21		LOGO: AMERICAN COUNTRY COUNTDOWN #38 HEARTACHE AND A HALF (A/B) Deborah Allen #37 A PLACE TO FALL APART (B) Merle Haggard LOGO: MY KIND OF COUNTRY, MY KIND OF MUSIC	08:25
18:46		NETWORK SPOT: Mediquell/Sugar Assoc. (OUT CUE) Voice out cold with... "...Sugar Assoc., Inc."	30/30
19:46		LOCAL INSERT:	:60
20:46		LOGO: AMERICAN COUNTRY COUNTDOWN #36 THE BOYS NIGHT OUT (B) Moe Bandy & Joe Stapley #35 GOT NO REASON NOW FOR GOIN' HOME (B) Gene Watson LOGO: MY KIND OF COUNTRY, MY KIND OF MUSIC	05:53
26:39		NETWORK SPOT: Campbell's Franco/Sears (OUT CUE) Jingle ends cold with... "...retail stores."	30/30
27:39		LOCAL INSERT:	:60
28:39		STATION I. D.:	:10



ABC Watermark



FOR WEEK ENDING: 11/17/84
 CYCLE NO. 844 PROGRAM 7 OF 13
 DISC & HALF HOUR NO. 1B
 PAGE NO. 2

3575 Cahuenga Blvd. W., Suite 555, Los Angeles, CA 90068

ABC Entertainment Radio Network

SCHEDULED START TIME	ACTUAL TIME	ELEMENT	RUNNING TIME
28:49		LOGO: AMERICAN COUNTRY COUNTDOWN #34 JAGGED EDGE OF A BROKEN HEART (A/B) Gail Davies #33 ME AGAINST THE NIGHT (B) Crystal Gayle #32 WHATEVER TURNS YOU ON (B/A) Kieth Stegall LOGO: MY KIND OF COUNTRY, MY KIND OF MUSIC	09:56
38:45		C-4 NETWORK SPOT: Kodak/Phillips (OUT CUE) Voice out cold with... "...everything we make."	30/30
39:45		LOCAL INSERT:	:60
40:45		LOGO: AMERICAN COUNTRY COUNTDOWN #31 YEARS AFTER YOU (B) John Conlee #30 CITY OF NEW ORLEANS (A) Willie Nelson LOGO: MY KIND OF COUNTRY, MY KIND OF MUSIC	08:10
48:55		C-5 NETWORK SPOT: Dodge Truck/Saxon (OUT CUE) Voice out cold with... "...leave the Saxon with me."	60/60
50:55		LOGO: AMERICAN COUNTRY COUNTDOWN #29 HOW BLUE (B) Reba McEntire #28 CROSSWORD PUZZLE (B/A) Barbara Mandrell	06:31
57:19		THEME UP AND UNDER WITH TALK UNIT ENDING AT: 57:26 THEME TO: 57:50	
57:50		C-6 LOCAL INSERT:	2:00
59:50		STATION I. D.:	:10

SCHEDULED START TIME	ACTUAL TIME	ELEMENT	RUNNING TIME
00:00		THEME AND OPENING OF PART II #27 ALL MY ROWDY FRIENDS ARE COMING OVER TONIGHT (B) Hank Williams Jr. #26 DIAMOND IN THE DUST (B) Mark Gray #25 SOME HEARTS GET ALL THE BREAKS (B) Charly McClain LOGO: MY KIND OF COUNTRY, MY KIND OF MUSIC	11:11
11:11		C-1 NETWORK SPOT: Tyndale Publishing (OUT CUE) Voice out cold with... "...good book lately."	:60
12:11		LOCAL INSERT:	:60
13:11		LOGO: AMERICAN COUNTRY COUNTDOWN #24 ONE TAKES THE BLAME (B) Statler Bros. #23 SHE SURE GOT AWAY WITH MY HEART (A) John Anderson LOGO: MY KIND OF COUNTRY, MY KIND OF MUSIC	06:55
20:06		C-2 NETWORK SPOT: Mediquell/Sugar Assoc. (OUT CUE) Voice out cold with... "...Sugar Assoc., Inc."	30/30
21:06		LOCAL INSERT:	:60
22:06		LOGO: AMERICAN COUNTRY COUNTDOWN #22 WISHFUL DRINKIN' (A/B) Atlanta #21 THE BEST YEAR OF MY LIFE (B) Eddie Rabbitt LOGO: MY KIND OF COUNTRY, MY KIND OF MUSIC	06:20
28:26		C-3 NETWORK SPOT: Campbell's Franco/Sears (OUT CUE) Jingle ends cold with... "...retail stores."	30/30
29:26		LOCAL INSERT:	:60
30:26		STATION I. D.:	:10



3575 Cahuenga Blvd. W., Suite 555, Los Angeles, CA 90068

ABC Entertainment Radio Network

SCHEDULED START TIME	ACTUAL TIME	ELEMENT	RUNNING TIME
30:36		LOGO: AMERICAN COUNTRY COUNTDOWN #20 IT'S A BE TOGETHER NIGHT (A) Frizzell & West #19 AMERICA (B) Waylon Jennings LOGO: MY KIND OF COUNTRY, MY KIND OF MUSIC	07:24
38:00		C-4 NETWORK SPOT: Kodak/Phillips (OUT CUE) Jingle fades after... "...everything we make."	30/30
39:00		LOCAL INSERT:	:60
40:00		LOGO: AMERICAN COUNTRY COUNTDOWN #18 DOES FORT WORTH EVER CROSS YOUR MIND (B) George Strait #17 WORLD'S GREATEST LOVER (A) Bellamy Bros. LOGO: MY KIND OF COUNTRY, MY KIND OF MUSIC	08:34
48:34		C-5 NETWORK SPOT: Dodge Truck/Saxon (OUT CUE) Voice out cold with... "...Saxon with me."	60/60
50:34		LOGO: AMERICAN COUNTRY COUNTDOWN #16 WHY NOT ME (A) Judds #15 I LOVE ONLY YOU (A) Nitty Gritty Dirt Band THEME UP AND UNDER WITH TALK UNIT ENDING AT: 57:39 THEME TO: 57:50	07:05
57:50		C-6 LOCAL INSERT:	2:00
59:50		STATION I. D.:	:10

SCHEDULED START TIME	ACTUAL TIME	ELEMENT	RUNNING TIME
00:00		THEME AND OPENING OF PART III #14 GOD WON'T GET YOU (B) Dolly Parton #13 P.S. I LOVE YOU (A) Tom T. Hall #12 SHE'S MY ROCK (A) George Jones LOGO: MY KIND OF COUNTRY, MY KIND OF MUSIC	08:54
08:54		C-1 NETWORK SPOT: Tyndale Publishing (OUT CUE) Jingle ends cold with... "...discover the book."	:60
09:54		LOCAL INSERT:	:60
10:54		LOGO: AMERICAN COUNTRY COUNTDOWN #11 MAGGIE'S DREAM (A/B) Don Williams #10 PINS & NEEDLES (B/A) The Whites LOGO: MY KIND OF COUNTRY, MY KIND OF MUSIC	06:29
17:23		C-2 NETWORK SPOT: Mediquell/Kodak (OUT CUE) Voice out cold with... "...goes by."	30/30
18:23		LOCAL INSERT:	:60
19:23		LOGO: AMERICAN COUNTRY COUNTDOWN #9 I'VE BEEN AROUND ENOUGH TO KNOW (B) John Schneider #8 TOO GOOD TO STOP NOW (B/A) Mickey Gilley LOGO: MY KIND OF COUNTRY, MY KIND OF MUSIC	05:35
24:58		C-3 NETWORK SPOT: Frito Corn Chips/GM (OUT CUE) Jingle ends cold with... "...you can live with."	30/30
25:58		LOCAL INSERT:	:60
26:58		STATION I. D.:	:10

SCHEDULED START TIME	ACTUAL TIME	ELEMENT	RUNNING TIME
27:08		LOGO: AMERICAN COUNTRY COUNTDOWN #7 NOBODY LOVES ME LIKE YOU DO (B) Anne Murray with Dave Loggins #6 PRISONER OF THE HIGHWAY (A) Ronnie Milsap LOGO: MY KIND OF COUNTRY, MY KIND OF MUSIC	08:12
35:20		C-4 NETWORK SPOT: Mediquell/True Value (OUT CUE) Voice out cold with... "...store or homecenter."	30/30
36:20		LOCAL INSERT:	:60
37:20		LOGO: AMERICAN COUNTRY COUNTDOWN #5 CHANCE OF LOVING YOU (A/B) Earl Thomas Conley #4 YOUR HEART'S NOT IN IT (B/A) Janie Fricke LOGO: MY KIND OF COUNTRY, MY KIND OF MUSIC	06:13
43:33		C-5 NETWORK SPOT: Dodge Truck/Saxon (OUT CUE) Voice out cold with... "...Saxon with me."	60/60
45:33		LOGO: AMERICAN COUNTRY COUNTDOWN #3 FOOL'S GOLD (A/B) Lee Greenwood #2 YOU COULD'VE HEARD A HEART BREAK (A) Johnny Lee #1 GIVE ME ONE MORE CHANCE (B) Exile CLOSING BILLBOARD: "AMERICAN COUNTRY COUNTDOWN HAS BEEN BROUGHT TO YOU IN PART BY RAM TOUGH DODGE TRUCKS. AT DODGE, WE DON'T JUST TALK TOUGH, WE PROVE IT."	12:11
56:57		THEME UP AND UNDER WITH TALK UNIT ENDING AT: 57:44 THEME TO: 57:50	
57:50		LOCAL INSERT:	2:00
59:50		STATION I. D.:	:10

FORMAT AND COMMERCIAL CLOCK

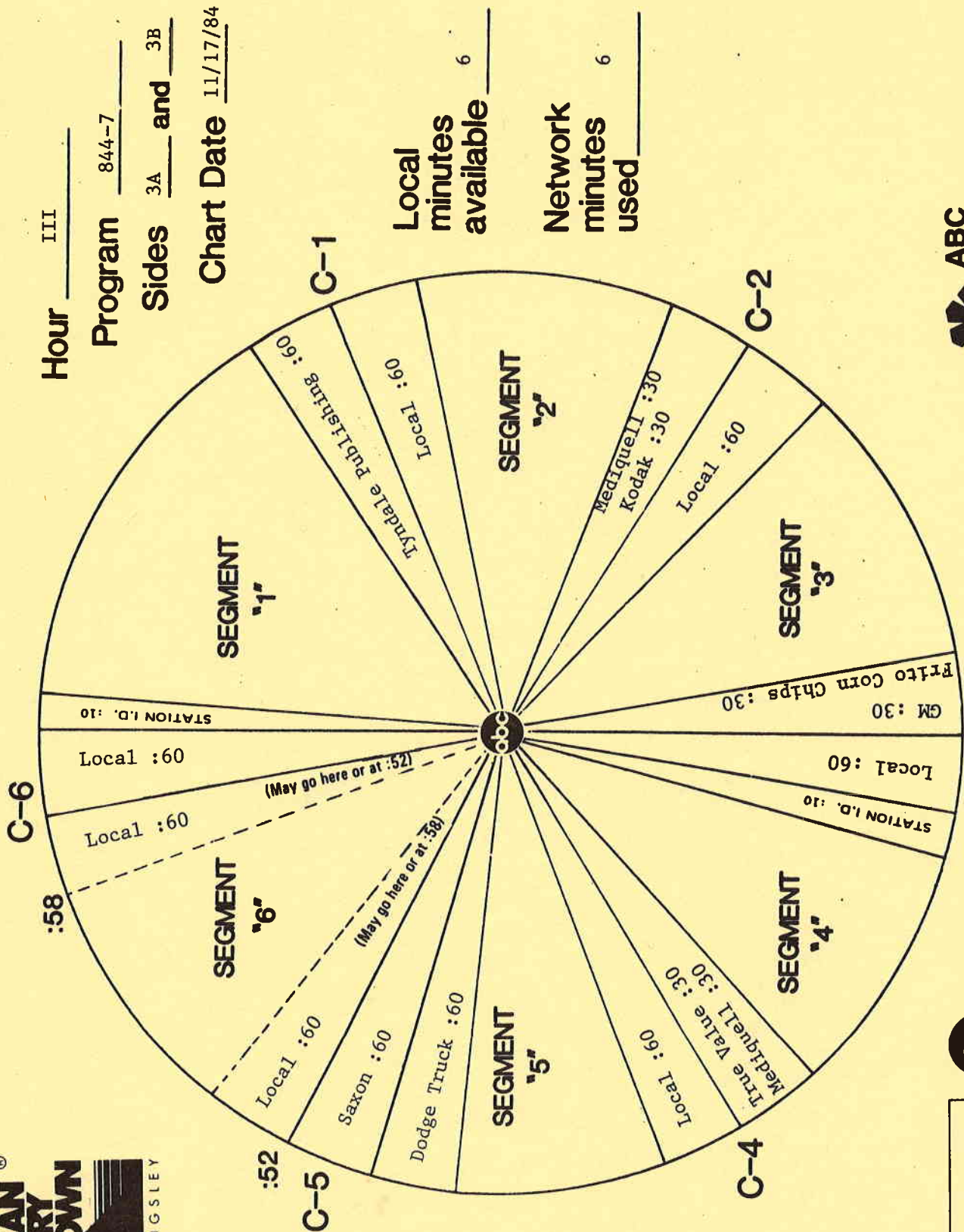


Hour III

Program 844-7

Sides 3A and 3B

Chart Date 11/17/84



Local minutes available 6

Network minutes used 6



ABC Watermark

SCHEDULED START TIME	ACTUAL TIME	ELEMENT	RUNNING TIME
00:00		OPEN BILLBOARD: "NOW AMERICAN COUNTRY COUNTDOWN, BROUGHT TO YOU IN PART BY RAM TOUGH DODGE TRUCKS. AT DODGE, WE DON'T JUST TALK TOUGH, WE PROVE IT. THEME AND OPENING OF PART I THEME: "MY KIND OF COUNTRY" (MARKWATER MUSIC/BMI) #40 PLEDGING MY LOVE (B) Emmylou Harris #39 RADIO LAND (A/B) Michael Martin Murphey LOGO: MY KIND OF COUNTRY, MY KIND OF MUSIC	08:21
08:21		NETWORK SPOT: Dodge Truck (OUT CUE) Jingle ends after... "...where it's mouth is."	:60
09:21		LOCAL INSERT:	:60
10:21		LOGO: AMERICAN COUNTRY COUNTDOWN #38 HEARTACHE AND A HALF (A/B) Deborah Allen #37 A PLACE TO FALL APART (B) Merle Haggard LOGO: MY KIND OF COUNTRY, MY KIND OF MUSIC	08:25
18:46		NETWORK SPOT: Mediquell/Sugar Assoc. (OUT CUE) Voice out cold with... "...Sugar Assoc., Inc."	30/30
19:46		LOCAL INSERT:	:60
20:46		LOGO: AMERICAN COUNTRY COUNTDOWN #36 THE BOYS NIGHT OUT (B) Moe Bandy & Joe Stappmley #35 GOT NO REASON NOW FOR GOIN' HOME (B) Gene Watson LOGO: MY KIND OF COUNTRY, MY KIND OF MUSIC	05:53
26:39		NETWORK SPOT: Campbell's Franco/Sears (OUT CUE) Jingle ends cold with... "...retail stores."	30/30
27:39		LOCAL INSERT:	:60
28:39		STATION I. D.:	:10

25:39



3575 Cahuenga Blvd. W., Suite 555, Los Angeles, CA 90068

ABC Entertainment Radio Network

SCHEDULED START TIME	ACTUAL TIME	ELEMENT	RUNNING TIME
00:00		THEME AND OPENING OF PART II #27 ALL MY ROWDY FRIENDS ARE COMING OVER TONIGHT (B) Hank Williams Jr. #26 DIAMOND IN THE DUST (B) Mark Gray #25 SOME HEARTS GET ALL THE BREAKS (B) Charly McClain LOGO: MY KIND OF COUNTRY, MY KIND OF MUSIC	11:11
11:11		C-1 NETWORK SPOT: Tyndale Publishing (OUT CUE) Voice out cold with... "...good book lately."	:60
12:11		LOCAL INSERT:	:60
13:11		LOGO: AMERICAN COUNTRY COUNTDOWN #24 ONE TAKES THE BLAME (B) Statler Bros. #23 SHE SURE GOT AWAY WITH MY HEART (A) John Anderson LOGO: MY KIND OF COUNTRY, MY KIND OF MUSIC	06:55
20:06		C-2 NETWORK SPOT: Mediquell/Sugar Assoc. (OUT CUE) Voice out cold with... "...Sugar Assoc., Inc."	30/30
21:06		LOCAL INSERT:	:60
22:06		LOGO: AMERICAN COUNTRY COUNTDOWN #22 WISHFUL DRINKIN' (A/B) Atlanta #21 THE BEST YEAR OF MY LIFE (B) Eddie Rabbitt LOGO: MY KIND OF COUNTRY, MY KIND OF MUSIC	06:20
28:26		C-3 NETWORK SPOT: Campbell's Franco/Sears (OUT CUE) Jingle ends cold with... "...retail stores."	30/30
29:26		LOCAL INSERT:	:60
30:26		STATION I. D.:	:10

27:26



3575 Cahuenga Blvd. W., Suite 555, Los Angeles, CA 90068

ABC Entertainment Radio Network

SCHEDULED START TIME	ACTUAL TIME	ELEMENT	RUNNING TIME
28:49		LOGO: AMERICAN COUNTRY COUNTDOWN #34 JAGGED EDGE OF A BROKEN HEART (A/B) Gail Davies #33 ME AGAINST THE NIGHT (B) Crystal Gayle #32 WHATEVER TURNS YOU ON (B/A) Kieth Stegall LOGO: MY KIND OF COUNTRY, MY KIND OF MUSIC	09:56
38:45		NETWORK SPOT: Kodak/Phillips (OUT CUE) Voice out cold with... "...everything we make."	30/30
39:45		LOCAL INSERT:	:60
40:45		LOGO: AMERICAN COUNTRY COUNTDOWN #31 YEARS AFTER YOU (B) John Conlee #30 CITY OF NEW ORLEANS (A) Willie Nelson LOGO: MY KIND OF COUNTRY, MY KIND OF MUSIC	08:10
48:55		NETWORK SPOT: Dodge Truck/Saxon (OUT CUE) Voice out cold with... "...leave the Saxon with me."	60/60
50:55		LOGO: AMERICAN COUNTRY COUNTDOWN #29 HOW BLUE (B) Reba McEntire #28 CROSSWORD PUZZEL (B/A) Barbara Mandrell	06:31
57:19		THEME UP AND UNDER WITH TALK UNIT ENDING AT: 57:26 THEME TO: 57:50	
57:50		LOCAL INSERT:	2:00
59:50		STATION I. D.:	:10

28:23



3575 Cahuenga Blvd. W., Suite 555, Los Angeles, CA 90068

ABC Entertainment Radio Network

SCHEDULED START TIME	ACTUAL TIME	ELEMENT	RUNNING TIME
30:36		LOGO: AMERICAN COUNTRY COUNTDOWN #20 IT'S A BE TOGETHER NIGHT (A) Frizzell & West #19 AMERICA (B) Waylon Jennings LOGO: MY KIND OF COUNTRY, MY KIND OF MUSIC	07:24
38:00		C-4 NETWORK SPOT: Kodak/Phillips (OUT CUE) Jingle fades after... "...everything we make."	30/30
39:00		LOCAL INSERT:	:60
40:00		LOGO: AMERICAN COUNTRY COUNTDOWN #18 DOES FORT WORTH EVER CROSS YOUR MIND (B) George Strait #17 WORLD'S GREATEST LOVER (A) Bellamy Bros. LOGO: MY KIND OF COUNTRY, MY KIND OF MUSIC	08:34
48:34		C-5 NETWORK SPOT: Dodge Truck/Saxon (OUT CUE) Voice out cold with... "...Saxon with me."	60/60
50:34		LOGO: AMERICAN COUNTRY COUNTDOWN #16 WHY NOT ME (A) Judds #15 I LOVE ONLY YOU (A) Nitty Gritty Dirt Band THEME UP AND UNDER WITH TALK UNIT ENDING AT: 57:39 THEME TO: 57:50	07:05
57:50		C-6 LOCAL INSERT:	2:00
59:50		STATION I. D.:	:10

26:48



3575 Cahuenga Blvd. W., Suite 555, Los Angeles, CA 90068

ABC Entertainment Radio Network

SCHEDULED START TIME	ACTUAL TIME	ELEMENT	RUNNING TIME
00:00		THEME AND OPENING OF PART III #14 GOD WON'T GET YOU (B) Dolly Parton #13 P.S. I LOVE YOU (A) Tom T. Hall #12 SHE'S MY ROCK (A) George Jones LOGO: MY KIND OF COUNTRY, MY KIND OF MUSIC	08:54
08:54		C-1 NETWORK SPOT: Tyndale Publishing (OUT CUE) Jingle ends cold with... "...discover the book."	:60
09:54		LOCAL INSERT:	:60
10:54		LOGO: AMERICAN COUNTRY COUNTDOWN #11 MAGGIE'S DREAM (A/B) Don Williams #10 PINS & NEEDLES (B/A) The Whites LOGO: MY KIND OF COUNTRY, MY KIND OF MUSIC	06:29
17:23		C-2 NETWORK SPOT: Mediquell/Kodak (OUT CUE) Voice out cold with... "...goes by."	30/30
18:23		LOCAL INSERT:	:60
19:23		LOGO: AMERICAN COUNTRY COUNTDOWN #9 I'VE BEEN AROUND ENOUGH TO KNOW (B) John Schneider #8 TOO GOOD TO STOP NOW (B/A) Mickey Gilley LOGO: MY KIND OF COUNTRY, MY KIND OF MUSIC	05:35
24:58		C-3 NETWORK SPOT: Frito Corn Chips/GM (OUT CUE) Jingle ends cold with... "...you can live with."	30/30
25:58		LOCAL INSERT:	:60
26:58		STATION I. D.:	:10

23:58



SCHEDULED START TIME	ACTUAL TIME	ELEMENT	RUNNING TIME
27:08		LOGO: AMERICAN COUNTRY COUNTDOWN #7 NOBODY LOVES ME LIKE YOU DO (B) Anne Murray with Dave Loggins #6 PRISONER OF THE HIGHWAY (A) Ronnie Milsap LOGO: MY KIND OF COUNTRY, MY KIND OF MUSIC	08:12
35:20		NETWORK SPOT: Mediquell/True Value (OUT CUE) Voice out cold with... "...store or homecenter."	30/30
36:20		LOCAL INSERT:	:60
37:20		LOGO: AMERICAN COUNTRY COUNTDOWN #5 CHANCE OF LOVING YOU (A/B) Earl Thomas Conley #4 YOUR HEART'S NOT IN IT (B/A) Janie Fricke LOGO: MY KIND OF COUNTRY, MY KIND OF MUSIC	06:13
43:33		NETWORK SPOT: Dodge Truck/Saxon (OUT CUE) Voice out cold with... "...Saxon with me."	60/60
45:33		LOGO: AMERICAN COUNTRY COUNTDOWN #3 FOOL'S GOLD (A/B) Lee Greenwood #2 YOU COULD'VE HEARD A HEART BREAK (A) Johnny Lee #1 GIVE ME ONE MORE CHANCE (B) Exile CLOSING BILLBOARD: "AMERICAN COUNTRY COUNTDOWN HAS BEEN BROUGHT TO YOU IN PART BY RAM TOUGH DODGE TRUCKS. AT DODGE, WE DON'T JUST TALK TOUGH, WE PROVE IT."	12:11
56:57		THEME UP AND UNDER WITH TALK UNIT ENDING AT: 57:44	
57:50		THEME TO: 57:50	
59:50		LOCAL INSERT:	2:00
		STATION I. D.:	:10

30:22